

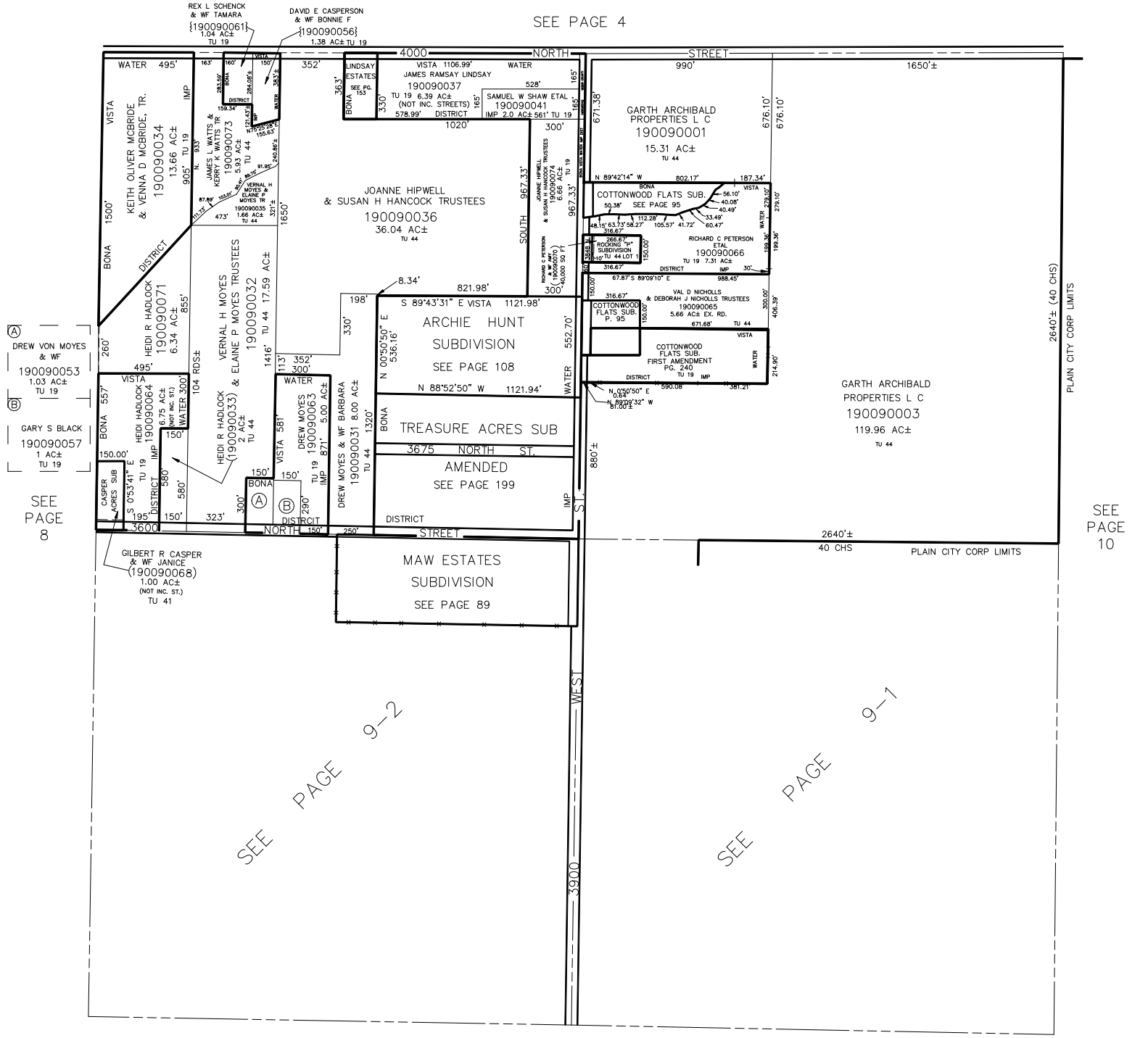
SECTION 21, T.7N., R.2W., S.L.B. & M.

IN WEBER COUNTY

TAXING UNIT: 19, 44

SCALE 1" = 400'

SEE PAGE 4



(A) DREW VON MOYES & WF 190090053 1.03 AC± TU 19

(B) GARY S BLACK 190090057 1 AC± TU 19

SEE PAGE 8

PLAIN CITY CORP LIMITS

SEE PAGE 10

SEE PAGE 26

SEE PAGE 23